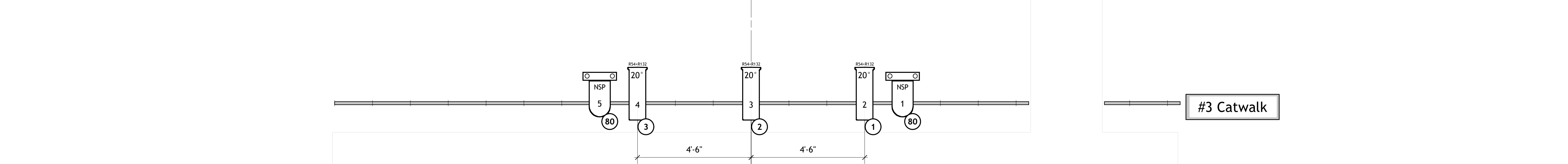
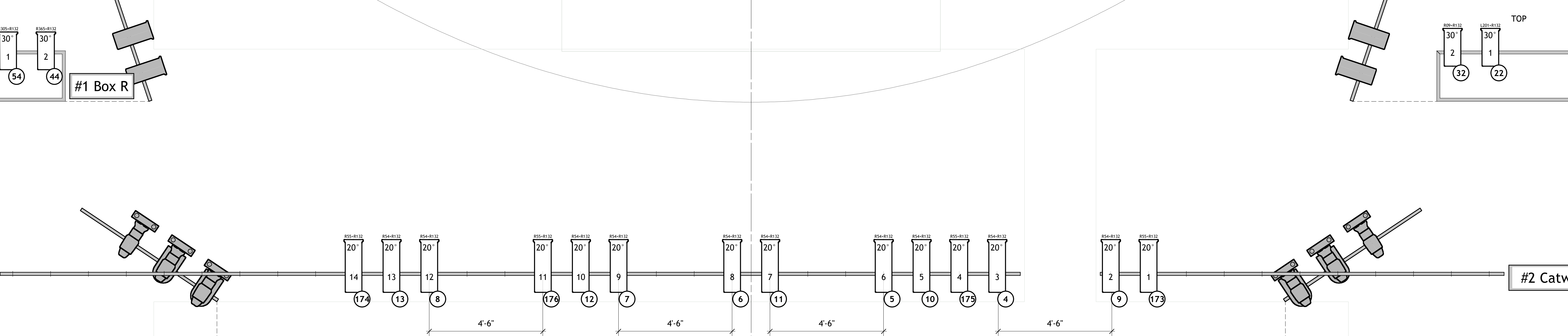
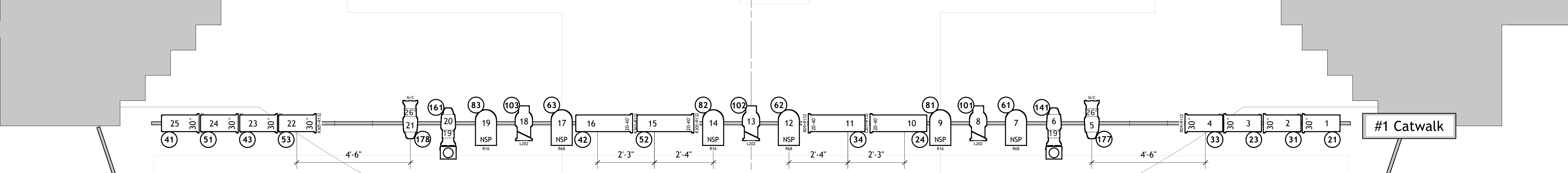
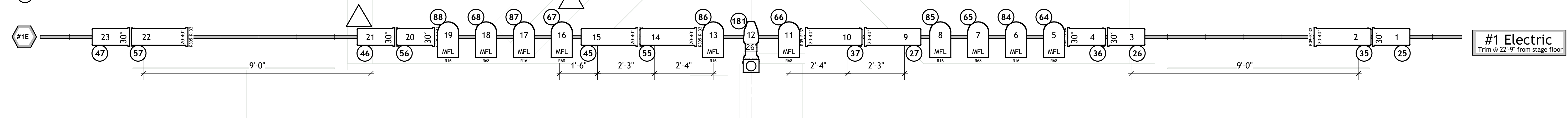
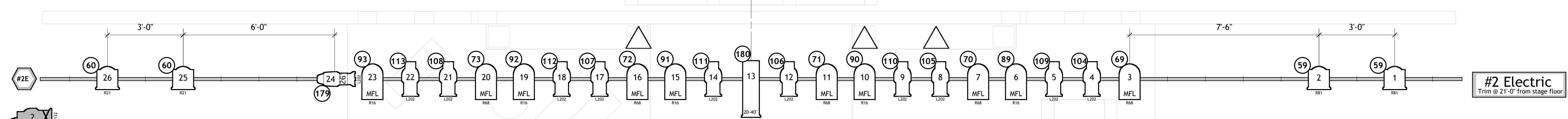
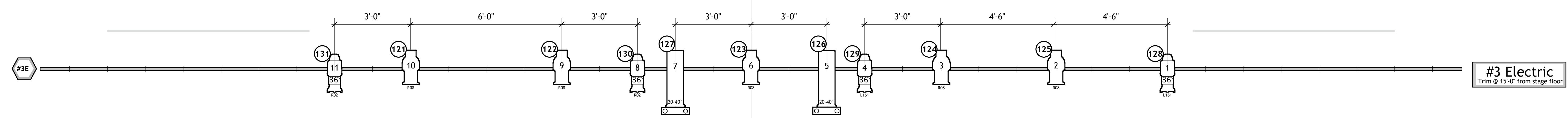
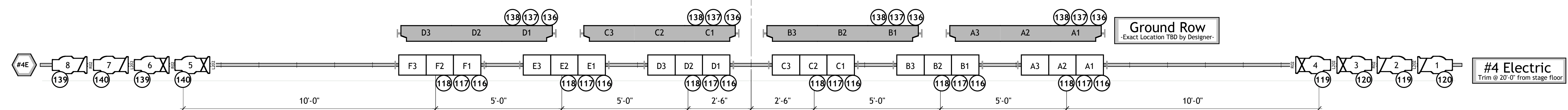


℄



SET MOUNT—Exact Location TBD By Designer

SET MOUNT—Exact Location TBD By Designer

Key to Symbols

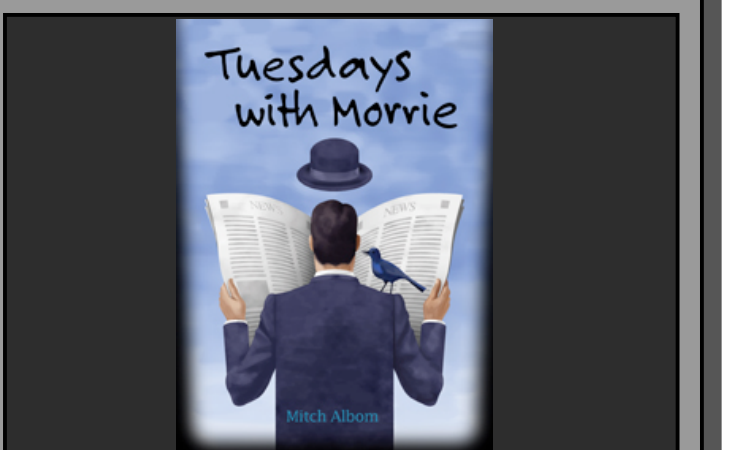
	Altman 1KL6 20' 575w
	Altman 1KL6 30' 575w
	Altman 1KL6 20' 40' Zoom
	Altman 360Q 6x16 575w
	Altman 360Q 6x12 575w
	Altman 360Q 6x12 575w
	ETC Source 4 19' 575w
	ETC Source 4 26' 575w
	ETC Source 4 36' 575w
	PAR64 NSP 1kw
	PAR64 MFL 1kw
	Altman 175Q 8' Fresnel 1kw
	Altman 3-Cell Sky Cyc 1kw
	R40 Strip, 6'-0" 3-channel
	Ellipscan
	Wybron The Scroller 7.5"
	Wybron The Scroller 10"

Unit Detail

	Color
	Unit Number
	Channel

- NOTES:**
- All units on 1'-6" centers unless otherwise dimensioned
 - All substitutions must be approved by Designer
 - All Electric Trims are from Stage Floor
 - All Electric Trims subject to change
 - Please have R119, R132, Blackwrap and Blacktak available at focus
 - Exact practical and floor mount locations TBD by Designer

This drawing represents visual concepts and construction suggestions only. It does not replace the knowledge and advice of a licensed structural engineer. The designer is unqualified to determine the structural appropriateness of this design and will not assume responsibility for improper engineering or use.



Production Team

Director:	David Grapes
Scenic Design:	Mike Nichols
Costume Design:	Olivia Koach
Sound Design:	Jason Pruzin
Stage Manager:	Julie Stemmler
Lighting Design:	Eric Larson
Master Electrician:	Matthew Webb

Tuesdays with Morrie
By Jeffrey Hatcher and Mitch Alborn
Arkansas Repertory Theatre

Scale: 1/2" = 1'-0"	Plate:
1/2" Light Plot	#1
Drawn By: E.J.L.	
Revision: 2/22/06	of 1

℄